

ł ),%,.ž.\$ ( ž(ž l ,) O-! , fi! +/\$!' ! (. -  
/!) \* & fl) ". ~ ~ O\$#/!) \* & Ł)) & , ~" °

---

Introduction.....	3
Oracle Certifications .....	4
Internet Explorer .....	5
Google Chrome 24+.....	6
Mozilla Firefox 17+ .....	6
Apple Safari .....	6
Microsoft Excel.....	7
Browser Configuration.....	8
POP-UP Blocker Causing Incorrect or No Page Results.....	8
Setting Up a Trusted Site in Internet Explorer.....	11



To access GeorgiaFIRST PeopleSoft Financials version 9.2 with the new PeopleTools version 8.523 most workstations will only need a compatible operating system and browser as shown in the Oracle Certifications section. In addition, the Browser Configuration section will explain how to handle POP-UP blockers and how to Set Up a Trusted Site.

Refer to the **Browser Compatability Guide** for troubleshooting specific browser related behaviors.





Certified Product	Certification Status
▼ Microsoft Internet Explorer	
	

---

Certified Product	Certification Status
Google Chrome 24 Microsoft Windows (32-bit) 7 Microsoft Windows x64 (64-bit) 7 Microsoft Windows x64 (64-bit) 8	Certified Certified Certified

Certified Product	Certification Status
Mozilla Firefox 17 Apple Safari 7 Microsoft Windows x64 (64-bit) 8	Certified Certified Certified

Certified Product	Certification Status
Apple Safari 7 Microsoft Windows x64 (64-bit) 8	Certified Certified



If you are not getting the anticipated results on a page, you may have a Pop-up Blocker feature turned on, which is preventing a form or report from appearing. You may encounter the Pop-up blocker in PeopleSoft.

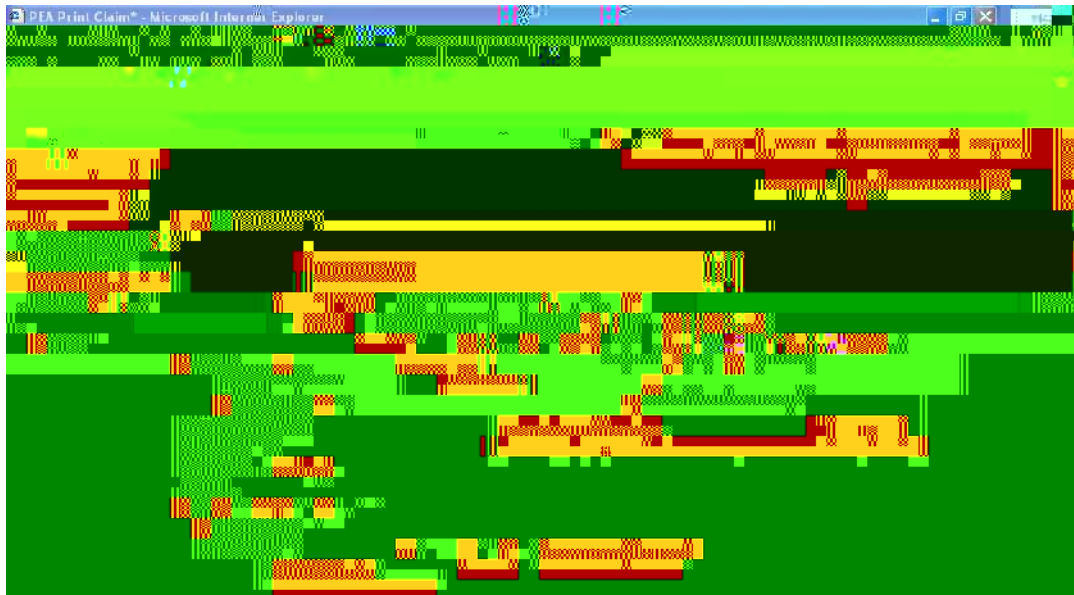
fi " fl+# fl~' (~, ( ° %† \$Ž) :

Many Internet websites produce advertisements that “Pop-up” on your screen. These advertisements, at times, may display in large quantities and can contain inappropriate content. In an attempt to manage Pop-ups better, your computer may be configured with a Pop-up Blocker. This Pop-up Blocker feature works very well in blocking Internet advertisements, but also blocks the PEA Claim and various other documents that you are attempting to view or print.

Two examples of common Pop-up Blockers and directions on how to disable them within PeopleSoft and make printing possible are discussed in the next sections.

. #fl%&! + " Ž ° %† \$Ž) ž ) + " Ž ", ))Ž&+~' (~, (

1. The following is the first message that appears.



Click on **OK**.

- 2.

- fl/O'40 #, / \$+&% Ž/ 2&& 3 \*20/O'40 /1". 7 "%%3/. ", /O3/. 2\$ \*\$+) &1&8 °





3. Right-click with your cursor over the message line. A list of options appears.
4. Select **Temporarily Allow Pop-ups**.

All pop-ups will be allowed during the current PeopleSoft session, but the Pop-up Blocker will be reinstated for future sessions.

#f!k%&! + "ž ° %†\$ž) ž ) + "ž ~ ž' ( %ž! ' ž+! #ž

The Pop-up Blocker can be disabled permanently this site by following the steps below.

1. Select the **Allow Pop-ups for this site** option.



From now on, the Pop-up Blocker will continue to block pop-ups from all other sites except for this one. The form will now successfully appear on the screen and can be printed.

**Note:** This is an example of the 'MSN' Tool Bar Popup Blocker. Other 3<sup>rd</sup> party toolbars have similar options.

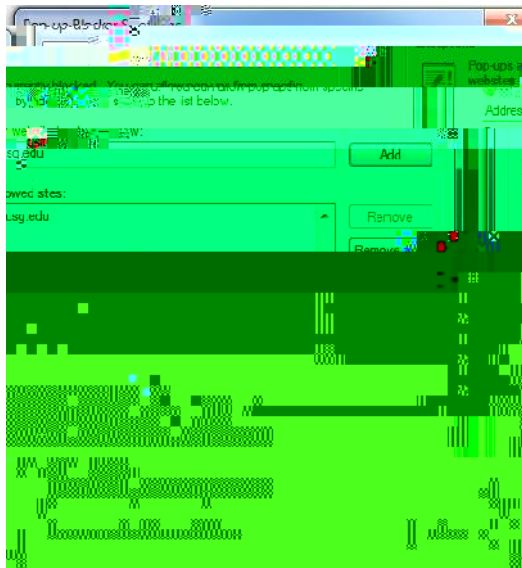
° %† \$#&! ~ ' ( ~ , ( \* ' &/fl) # , \* ° )' - \*ž) \*

NOTE: Third party tool bars and Add-ons may also contain pop-up blocker functionality that would need to be configured separately.

1. ž//,ž fl/O'40", /\$+&1ž fl/O'40", /\$+&1† &33: (2

~ °4ž °&%4





1.            Z//,2
2.            fi03/. 2
- 3.
4.    Click the **Block Popup Windows** check box OFF. Or, select the Exceptions button and copy and paste the URL from your PeopleSoft site into the space provided or add **\*.usg.edu** to the Allowed Sites list.
5.            ,./2&    fi/

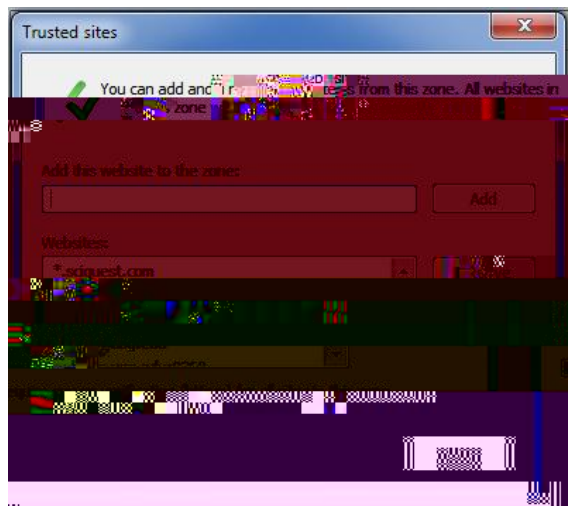
1.            †""†\*
2.            "/,\$+ fi/O'40! \*.%62



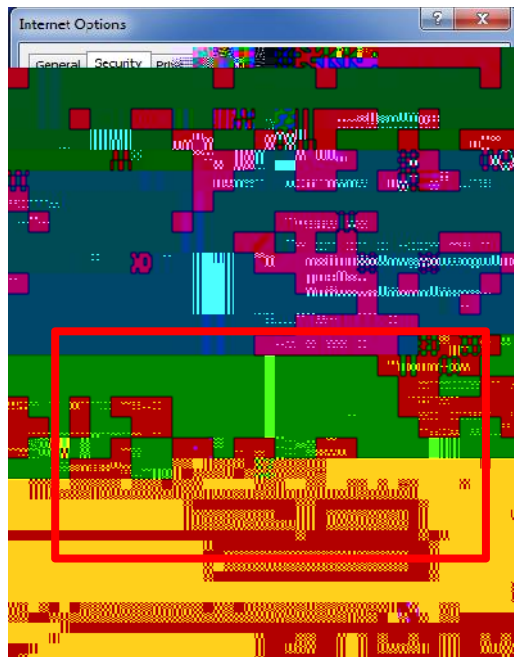
Follow these steps to add your PeopleSoft Financials web site to the list of trusted sites in Internet Explorer.

1. Select **Tools**  $\varnothing$  **Internet Options**.
2.  $\uparrow$   $\&\$41^*37$
3. Click on the **Trusted Sites** icon.
4. Click on **Sites**. The **Trusted sites**





8. Click on **OK**. This brings you back to the **Trusted sites** dialog box.
9. Now that you have added your web site to the Trusted Sites list and verified that only sites you trust are listed in Step 7, you should set the Trusted Sites security level to the **Medium-Low** default level.



10.  fi/
  11. Restart Internet Explorer.
-